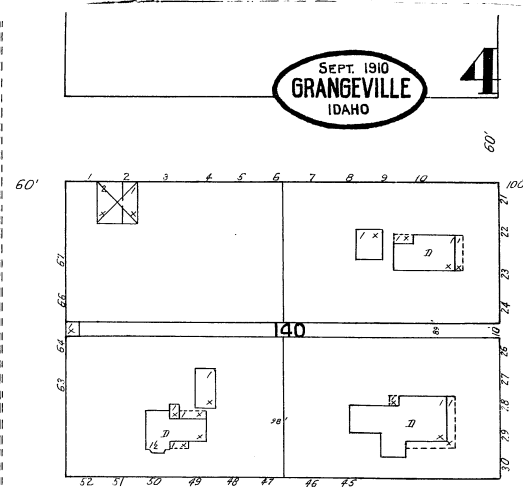
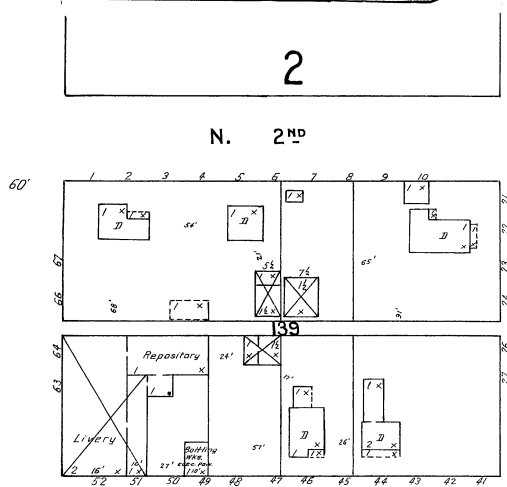
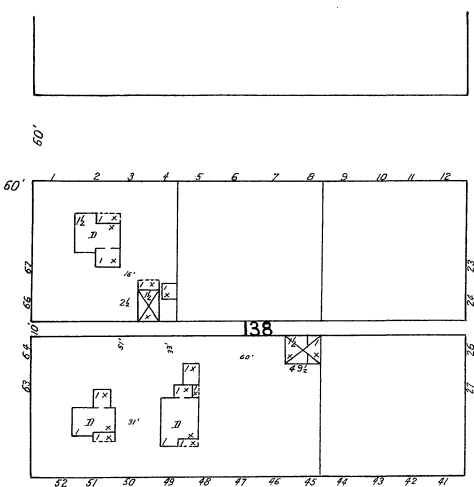


SEPT. 1910  
GRANGEVILLE  
IDAHO

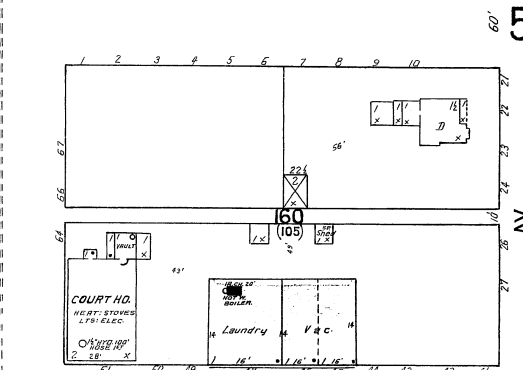
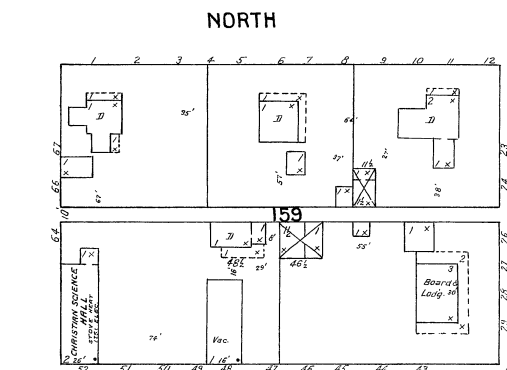
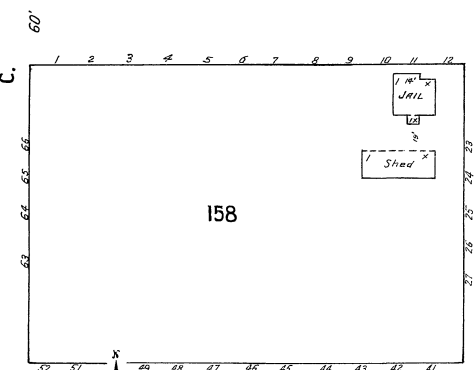
2

4

N. 2<sup>ND</sup>



NORTH

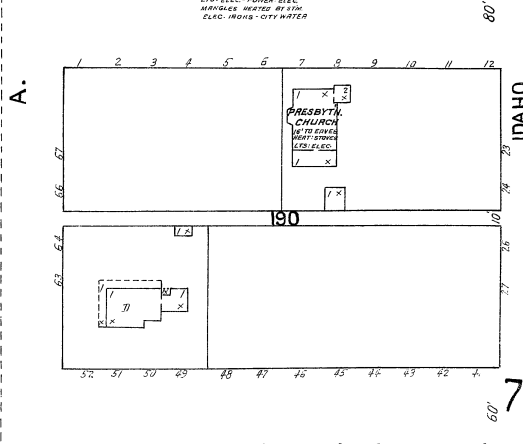
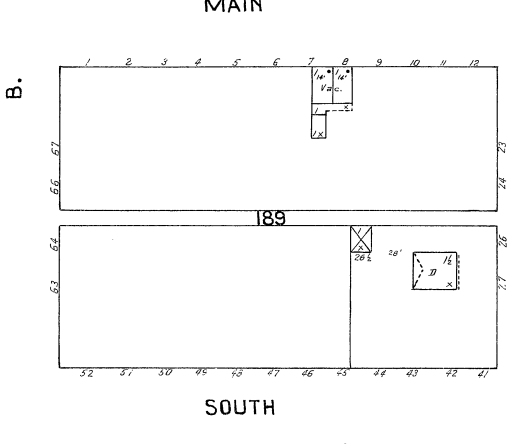
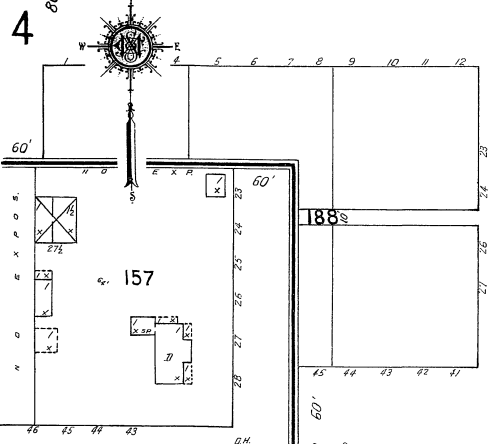
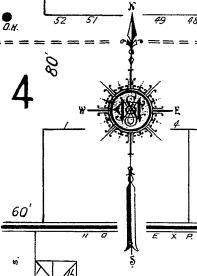


MAIN

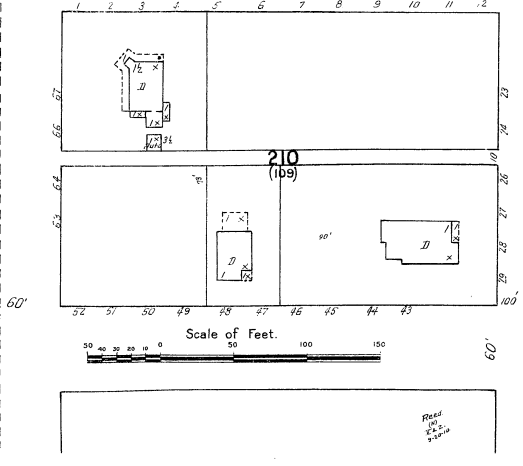
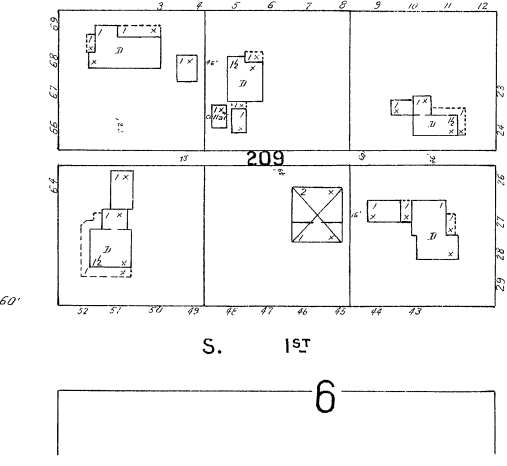
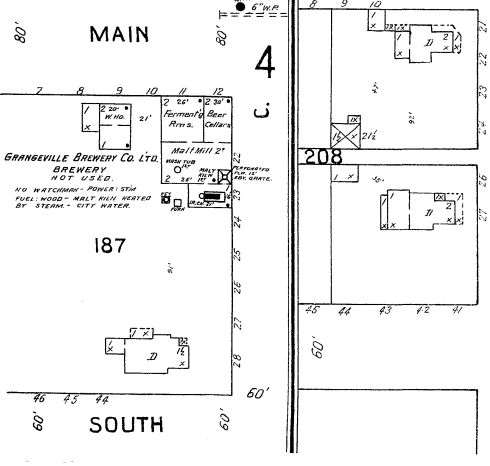
GRANGEVILLE  
ELEC. TRUNKING  
NO. 100 FT. CUM. - PUL. WOOD  
175' 1/2" ELEC. - POWER ELEC.  
HANDLES WETTER BY 5000  
ELEC. WIRING - CITY WATER

5

AV.

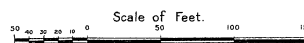


SOUTH



S. 1<sup>ST</sup>

6



7

IDAHO